


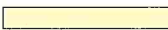



BOYERTOWN AREA SCHOOL DISTRICT
BOYERTOWN WEST MIDDLE SCHOOL PROJECT UPDATE
MAY 24, 2016



Define Actual Scope

- Safety, Health, and Security
- Energy Efficiency
- Accessibility (ADA)
- Infrastructure
- Educational Programs/Space to Implement

-  1963 Building
-  1998 Addition
-  Courtyard

KCBA Authorized to Develop Specific Designs to Verify Scope
Boyertown West Middle School





TOTAL BUILDING UPGRADES

- New HVAC System w/ Air Conditioning
- New Electrical System
- New Lighting

1963 GENERAL UPGRADES

- Replace Windows
- Asbestos Abatement & New Floor Tile
- Replace Doors & Hardware
- General ADA Renovations

1963 SPECIFIC UPGRADES

FLOORING UPGRADES, ADA IMPROVEMENTS, BLEACHERS, STAGE CURTAINS

SAFETY UPGRADES & RECONFIGURATION

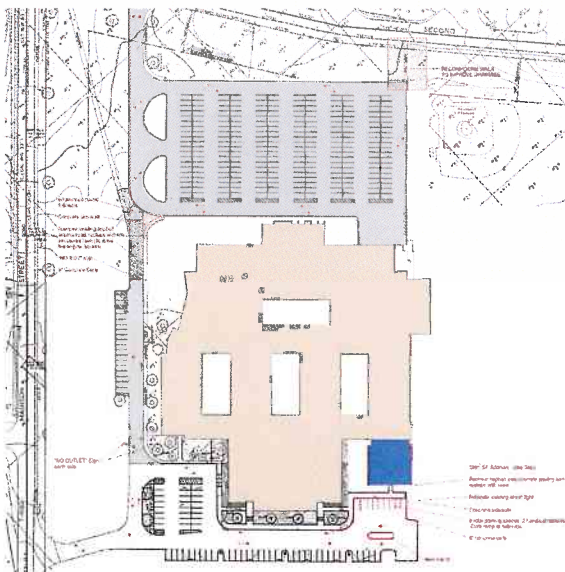
ADA - ACCESS / CLEARANCE / FIXTURES

1998 SPECIFIC UPGRADES

REPLACE ROOF

**Proposed Minimum Renovations – Specific Areas of Renovation
Boyertown West Middle School**

kcbA
Architects



Site Safety & Infrastructure Upgrades

- Resolve Pedestrian/Vehicle Conflict at Front Entry
- Reconstruct Deteriorated Asphalt Paving
- Replace Deteriorated Curbs
- Replace Deteriorated Sidewalks
- Replace Site Lights with LED

**Infrastructure & Safety Upgrades
Boyertown West Middle School**

kcbA
Architects

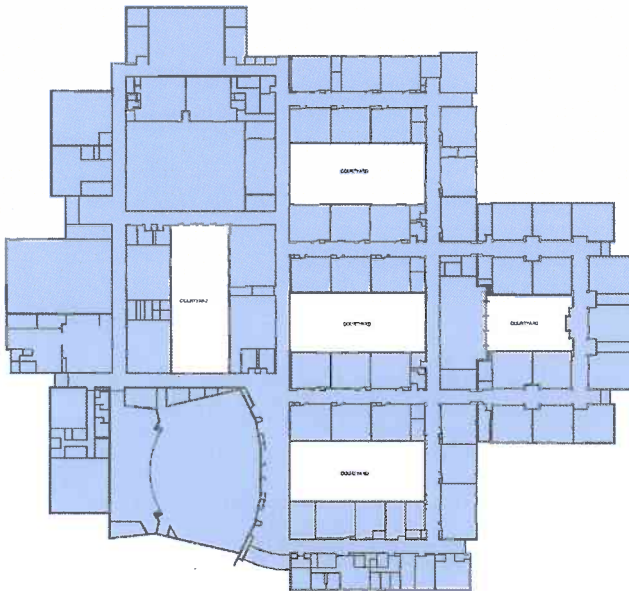


EDUCATIONAL UPGRADES

1. Science Lab Upgrades
2. STEM Fit-Out
3. Art Room Fit-Out
4. Rebuild Locker Rooms

Based Upon BASD – **Potential Scope Increase**
Boyertown West Middle School

kcbA
Architects



Infrastructure Upgrades

1. Address Deteriorating Piping
2. Install Additional Cameras
3. Replace Ceilings
4. Install New Switchgear
5. Upgrade Data System
6. Replace Casework
7. Refurbish Gym Floor and Stage

Based Upon BASD – **Potential Scope Increase**
Boyertown West Middle School

kcbA
Architects



Possible Additions

1. Space for Special Education
 - House Increase in Special Needs Students
2. Space for Mechanical Equipment
 - Indoor Equipment Lasts Longer
3. Space to Accommodate ADA
 - Larger Toilet Rooms May Displace Educational Space
4. Space to Teach Students During Renovations
 - Temporary Modular Classrooms or
 - Permanent Classrooms (Used During East Project)

Based Upon BASD – **Potential Scope Increase**
 Boyertown West Middle School

kcb
 Architects